

CHASSELL TOWNSHIP RECREATION PLAN 2023-2028



Chassell Township Recreation Committee
Chassell Township Planning Commission
Chassell, MI 49916

December 13, 2023

INTRODUCTION

Chassell Township has an excellent assortment of outdoor and indoor recreation opportunities available to its residents and visitors to the “Copper Country”. These include recreational lands, waterways, trails, and facilities of Michigan Technological University, that typically would only be available in larger cities. Furthermore, there are remarkable outdoor recreation resources available throughout Baraga, Houghton, Keweenaw, and Ontonagon Counties.

The Chassell Township Recreation Plan describes the community, reviews accomplishments from the most recent five-year recreation plan, describes the current planning process, provides a basic inventory of existing recreation facilities, highlights the goals and objectives, and presents a five-year action program for future recreational development. A public hearing was held on November 2, 2023, to elicit comments on a Review Draft of the Plan. The 2023-2028 Recreation Plan was adopted by the Township Board on November 8, 2023 (Appendix A – Resolution of Township Board).

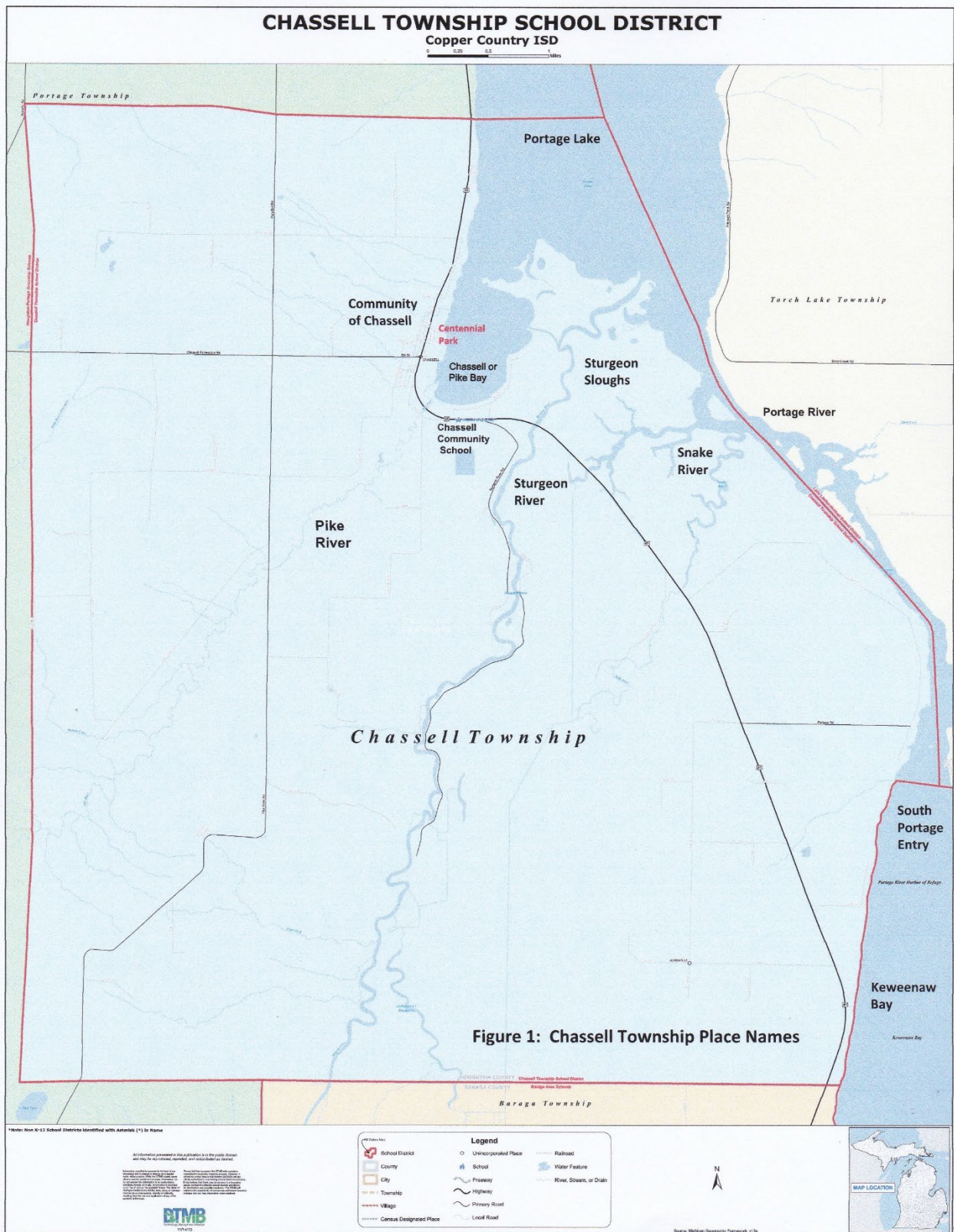
COMMUNITY DESCRIPTION

Chassell Township is located in Houghton County in the Upper Peninsula of Michigan. A portion of the Township borders Baraga County, Portage Township, Portage Lake, and Lake Superior’s Keweenaw Bay (Figure 1 – next page). The total land area for the Township is approximately 48 square miles.

During the 1880s, the site of the village of Chassell was purchased by the Sturgeon River Lumber Company for a sawmill and town site. The village and surrounding area grew in population, resulting in the Township of Chassell being chartered in 1888 by the State of Michigan. The village of Chassell served as a regional lumber processing center into the early 20th century. During the early 1900s, the Worcester Lumber Company was the largest sawmill in the Great Lakes region (Figure 2) with the operations closing in 1928.



Figure 2. Worcester Lumber Company sawmill circa 1909-10 and today.



The population of the western Upper Peninsula reached a peak in the 1920s when mining and lumbering activities were booming. Since that time, there has been considerable out-migration of residents in response to the decline of those industries. The population of Houghton County and Chassell Township also followed this trend, decreasing 51.8 percent (71,930 to 34,652) in the period from 1920 to 1970. Since 1970, Houghton County's population has stabilized due to the presence of Michigan Technological University (MTU), technology-based manufacturing and services, government, tourism serving businesses, and a growing number of remote workers. Chassell Township's population is further characterized by seasonal influxes of residents and tourists. In the 2020 U.S. Census, Houghton County was the only Upper Peninsula County to experience a population increase compared to the 2010 U.S. Census. Chassell Township supported this population increase with growth from 1,812 residents in 2010 to 1,878 in 2020, a 3.6 percent increase.

The lands of Chassell Township are largely rural in character with one main population center – the community of Chassell. The community is located on Chassell (Pike) Bay in the northern part of the township and is predominantly residential, with many homes located along the shoreline of Chassell (Pike) bay and along and immediately west of its downtown on US 41. Immediately north of town along Portage Lake is a concentration of year-round and seasonal homes, some of which are rented to tourists in the summer and MTU students during the school year.

The community of Chassell is not incorporated, and therefore, is governed by the Chassell Township Board of Supervisors. The commercial character of the community is primarily roadside commercial, and composed of a service station, small bulk and specialty food store, a small general store, a Dollar General Store, a chiropractic office, post office, small retail shops, and short-term rentals (Figures 3 – 4). Within the town are a couple of sites currently in the Houghton County Land Bank which are both under discussion to be re-developed. Additional sites with open space are available east, north, and south of the downtown.



Figure 3. Downtown Chassell entrance to Centennial Park.



Figure 4. Views of downtown Chassell on US 41

East of town, along Chassell (Pike) Bay, is a large vacant tract of land which was previously occupied by the Worcester Lumber Company. A portion of this tract was acquired by the Township and dedicated to the public as Centennial Park (Figure 5). The township also acquired 67 acres to the west of the Chassell Heritage Center which includes the Misslitz (baseball) Field, as well as the lower portion of the cross country ski, snowshoe, and fitness trails.



Figure 5. Centennial Park looking across Chassell (Pike) Bay

Many Chassell residents are employed by Michigan Technological University in Houghton and a growing number of residents (over 25 by recent count) work remotely for employers outside the region from their homes. Others work for private companies throughout the area or are self-employed. Most local residents and the summer tourist population go to the Houghton-Hancock area to do their shopping.

Chassell Township is well suited for agricultural purposes due to its unique micro-climate conditions. The soil and climate are especially appropriate for strawberries and blueberries, and most of the approximately 650 acres planted in Houghton County are in Chassell Township (Figure 6). Chassell is the home of the Copper Country Strawberry Festival, held in July. However, farming activity has declined over the years.



Figure 6. Chassell Township's maritime micro-climate supports agricultural fruit production, and its annual Copper Country Strawberry Festival

Chassell Township's climate is affected by Lake Superior, moderating temperatures, and generating large amounts of snow during the winter months. Average snowfall in the area exceeds 200 inches annually. The coldest month is January when temperatures average 14.6 degrees F. The hottest month is July, with an average temperature of 65.6 degrees F. Prevailing winds are southerly during warm weather and northwesterly during the rest of the year.

Chassell Township has a variable topography with ridges and valleys which generally run southwest to northeast. Slopes along the ridges range from 8.1 to 15 percent and exceed 15 percent in several small areas. However, most of the land in the township is quite flat, with slopes of less than 8 percent. The northwestern portion of the Township is the most rugged with elevations exceeding 1,000 feet above MSL (mean sea level datum). In the central portion, elevations decrease to almost 600 feet along Chassell (Pike) Bay and the valleys of the Sturgeon and Snake Rivers. Extensive swampy areas are found between these two rivers and on the delta which forms at their mouths. East of the river valleys, elevations again rise to 757 feet on a small ridge in the east central portion of the Township. Elevations along Keweenaw Bay range from 606 to 670 feet above sea level.

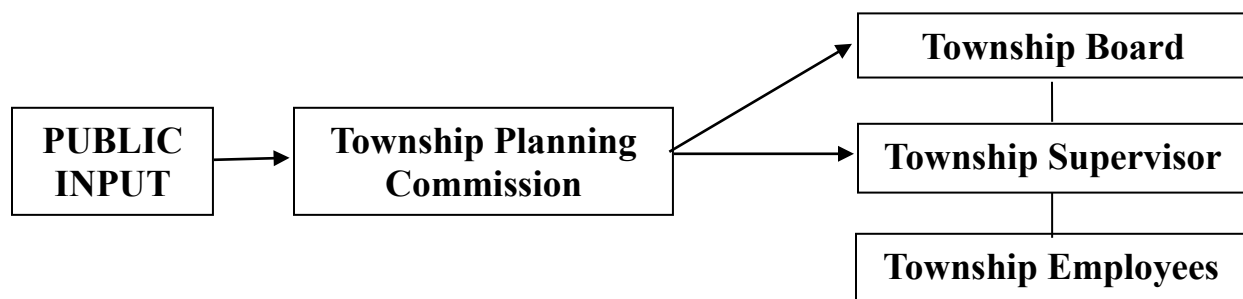
Chassell Township lies in the Sturgeon and Portage drainage areas, both of which flow into Lake Superior. The Sturgeon River basin includes the Snake River, Pike River, Sturgeon River, Otter

River, and several small tributaries. The basin drains western Baraga County and southern Houghton County, and empties into Portage Lake at Chassell. There are no known sources of industrial waste discharging into the basin, but runoff from agricultural activities near the mouth may have a minor influence on water quality. A recent analysis of Chassell (Pike) Bay by Restorative Lake Services found over thirty varieties of lake weed native to the state of Michigan highlighting a robust ecological system. The Portage drainage area includes Portage Lake and Portage River, the Trap Rock River, and numerous creeks in northern Houghton County. The Portage River and Lake serves as a shipping channel.

ADMINISTRATIVE STRUCTURE

Park and recreation properties/facilities within Chassell Township are administered primarily by the 5-member Township Board of Supervisors, with the exception of school district-related properties/facilities. Township ski and snowshoe trails are managed by volunteer groups/individuals. The Recreation Committee of the Chassell Township Planning Commission assists the Board in the preparation of action plans and proposals associated with recreation opportunities in the Township by seeking public input through a recreation survey and by developing the draft Recreation Plan. They also write grant proposals to complement funding available through the Township's ½ mil Recreation millage (passed initially in 2018 and renewed in 2023) and coordinate volunteers to implement projects. Major initiatives are discussed and voted on by the Township Board before implementation. A basic organization chart is included below.

Chassell Township supports and maintains park and recreation facilities through annual budget appropriations. In the most recent fiscal year (April 1 – March 31), Chassell Township expended approximately \$5,624 for maintenance and upgrades of facilities and \$42,568 in the current fiscal year. Support for improvements and upgrades comes from the recreation millage (which brought in \$34,327.95 in the most recent fiscal year and from competitive grants for which the township applies. Additional funds are budgeted for the development of recreation projects and facilities, as funds are available. An example of this would be the funding of the preliminary engineering study completed by U.P. Engineers and Architects which was an important step ahead of the township applying for an receiving its recent \$495,000 SPARK Grant award for critical improvements to Centennial Park. The maintenance of park and recreation facilities is carried out primarily by Township employees.



Chassell Township's Organization

ACCOMPLISHMENTS FROM MOST RECENT 5-YEAR PLAN

Based upon public input gained through a recreation survey in 2017, the Recreation Committee recommended four priority development concepts in the 2018 – 2023 Chassell Township Recreation Plan. These included:

1. Enhancement of the recreational trail system;
2. Fitness Trail
3. Water Trail; and
4. Dog Park

Specific to these concepts, the committee recommended seeking funding opportunities to establish an historic interpretive trail on the former site of the Worcester Lumber Company sawmill. The committee noted the possibility of developing township land at the US 41 bridge over the Sturgeon River. The committee also identified the unused sawdust pile from the Worcester Lumber Company mill as a potential site for a fenced off-leash dog park.

2019 Projects

The fenced off-leash dog park project involved a substantial amount of in-kind labor to go along with the roughly \$19,000 cost associated with the installation of the fences and gates.

The access to the site was the first challenge as a forest had grown over the potential access point to the sawdust pile. A group of volunteer sawyers for the North Country Trail coordinated by Planning Commission Vice-Chair Keith Meyers would chainsaw the pathway from the parking area to the sawdust pile followed by volunteer skid-steer work by Township Board Trustee/Planning Commission member Dan Palosaari to smooth the pathway. Significant volunteer effort also included many hours picking glass and other foreign materials out of the sawdust. Planning Commission Chair Brian Waters dragged the surface of the sawdust pile to smooth it out.



NCT volunteer chainsaw crew: Mark Roberts, Ken Rubin, John Diebel, and Keith Meyers

Bids were secured for the fence and gate construction based upon the specifications outlined for the layout of the large and small dog parks developed by the Planning Commission. Construction was awarded to Marquette Fence which completed the work in July. Throughout the construction Brian Waters and Keith Meyers continued to spend volunteer hours clearing brush and limbing trees in the small dog park and along the proposed fence lines. Chassell DPW staff also assisted with smoothing out the pathway and entrance to the park as well as with hauling away cut materials that volunteers loaded into the township's dump truck.



Top right: Tim Viola smooths the entry; middle: Marquette Fence installing fence posts; lower left: Brian Waters cutting roots at the gate entrance.

Keith Meyers and Dillon Geshel researched best practices on dog park rules and the committee met with the late Houghton County Sheriff Brian McLean (below left with Planning Commission Chair Brian Waters) to review rules and get his recommendations on enforcement. The Chassell Bark Park name resulted from a competition among students at the Chassell Township Schools which was decided by the Planning Commission. 80% of the sign's cost was covered by a Regional Prosperity Initiative Community Marketing Mini-Grant from the Western Upper Peninsula Planning & Development Region that Keith Meyers wrote on the township's behalf. The sign was produced by Industrial Graphics in Houghton and highlights the park's rules.



The Community Marketing Mini-Grant also covered 80% of the cost of the current Strawberry Festival Banner that goes over US 41 with the other 20% being covered by the Chassell Lions Club. The grant also covered 80% of the cost of a new Centennial Park sign within the park and ten light pole banners that promote the township's key recreational assets and Chassell as a great place to live, work, and play.



2019 also saw the completion of a 10-station, 4-kilometer, fitness trail on the lower portion of the Chassell Classic Ski Trail and the reconstruction of the South Bridge on the trail. Planning Commission Vice-Chair Keith Meyers wrote a Portage Health Foundation Recreation grant proposal to cover 75% of the project's cost which resulted in an \$11,520.52 award to the Township with the balance of the cost matched from the township's recreation millage.



Planning Commission Chair and Vice-Chair Brian Waters and Keith Meyers, along with Township Supervisor David Mattson, and Portage Health (now Copper Shores Community Health) Foundation Executive Director Kevin Store at the grant award presentation.

The fitness trail project involved an outstanding partnership with Michigan Technological University professor Dr. John Durocher who guided the Planning Commission on the ten equipment choices made for the trail. Dr. Durocher and his students (particularly Colleen Toorongian, Thomas Basala, and Will Hagelthorn) were also involved in the trail's construction as well as with the development of videos about how to use the equipment that can be found on the township's webpage and the development of signage about how to use the equipment at each location on the trail. The cost of the signage was covered by Purdue Northwest University where Dr. Durocher is now employed.

The execution of the project started with reconstruction of the South Bridge on the trail. The removal of the former bridge and the construction of the new bridge was completed by Mike Randell's Chassell Township Schools' construction trades class with coordination from Jim Tervo on the needed materials.



Left: Dr. John Durocher and Brian Waters with Keith Meyers walking the trail to confirm the equipment layout; Right: Mike Randell's construction trades class rebuilding the South Bridge

Once the equipment was delivered, Jim Tervo and Keith Meyers located the equipment on the trail. A variety of volunteer teams came together over the months of September and October to install the equipment by digging holes, setting posts in Quikrete, and assembling the equipment. Critical skills were brought to the project by Dennis Karvakko whose tool and die background was essential as re-tapping of threads was required on some of the equipment as well as making patterns for setting J-bolts. Dan Palosaari, in addition to providing his own time and expertise on the project, lent his Polaris RZR to the project which allowed for transporting what seemed like countless 80-pound bags of Quikrete to each of the locations and for moving 5-gallon buckets of water from the nearby creeks. Pete Torola brought excellent problem-solving skills to the project which were critical as all stations needed to be level and certain stations had to be constructed to tight tolerances.



Unwrapping the equipment and digging holes where it would be placed.



Left: Dennis Karvakko re-tapping threads; Right: getting forms in place to set the equipment in Quikrete



Left: Dan Palosaari and Will Hagelthorn mixing Quikrete; Right: Pete Torola finishing the surface before applying the pattern and adding J-bolts



Left: Dan, Will, and Pete setting J-bolts in the pattern; Right: repeating the process for other equipment on the trail held down by J-bolts



Left: making a run to McGann's for more Quikrete; Right: Pete, Will, Dan, and Dennis setting another piece of equipment



Left: JD Uponen and Dennis; Right: mixing more Quikrete at the next location with Pete, Will, Dennis, and Dan



Left: Will and Pete, ready to set more J-bolts; Right: Hauling more Quikrete with the RZR



Left: JD and Pete mixing Quikrete for the trickiest installation; Right: Dennis after getting the assembly addressed at another station



Getting hardware in place on two sites and completing one during the week with Dennis in preparation for finalizing the rest over the coming weekend.





Pete tackling the most challenging station to get level.



Through a combination of 2 x 4s nailed to trees and twine, Pete found a way to get this station level.



Installing the horizontal ladder



Will, Dennis, Brian, and Pete – checking out equipment after the Quikrete cured.



Jim and Andi Vendlinski helping with Quikreting in the last station



Bill Binroth and Dennis Karvakko tightening down the nuts on the J-bolts



In October 2020, Colleen Toorongian created video clips on how to use the fitness equipment. These videos can be found on the Chassell.net website.



As part of her graduate work at Purdue Northwest, Colleen Toorongian developed signs on how to use and benefit from the use of the fitness equipment with funding from Purdue Northwest. Planning Commission member Steve Spahn (above left) and Keith Meyers installed the signs in July 2022.

2020 Projects

Working toward the development of a river trail on the Sturgeon River, the Planning Commission took steps to develop a canoe/kayak launch site on the northwest side of the US 41 bridge over the river. Planning Commission Vice-Chair Keith Meyers wrote a Portage Health (now Copper Shores Community Health) Foundation grant seeking funding to support the costs to excavate a notch in the river bank and to acquire a floating launch dock. A \$20,000 grant was awarded to support the project.

U.P. Engineers and Architects helped to flesh out the needed launch vehicle and the site's design to make the approach and launch vehicle Americans with Disabilities Act (ADA) accessible working from a preliminary engineering study completed by Traverse Engineering Services.

Keith Meyers, on the township's behalf, applied for and received the required permit approvals from the State of Michigan's Environment, Great Lakes, & Energy (EGLE) agency and the U.S. Army Corps of Engineers.

After a competitive process, DP Construction from Chassell was awarded the excavation work to create a notch in the river bank to include a headwall to which a gangway would be attached leading to the floating launch dock. The excavation work occurred in September 2021.



Excavation of the Sturgeon River bank with the headwall already poured.



Installing rip rap to protect the notch from erosion



Once the excavation work was completed, DPW staff, including Craig Austin and Joe Youngman, and Planning Commission Vice-Chair Keith Meyers seeded and placed erosion control mats over the slopes along the launch's approach.

The Planning Commission sought proposals during both 2021 and 2022, but did not find satisfactory pricing. 2022 was particularly difficult due to a significant spike in aluminum prices. Pricing abated in 2023 and the township awarded the production of the gangway and launch dock to Feighner Dock in Charlotte, Michigan. Supplier part shortages delayed the installation until July 23rd..



In conjunction with this project, the Planning Commission sought a Visit Keweenaw Destination Grant opportunity. Keith Meyers wrote the grant proposal which Visit Keweenaw funded at just under \$3,000 to cover the cost of two interpretive signs for the launch site. One provides a map of the river and discusses the river's historical use for moving white pine timber. The second interprets the wildlife and fishery found along and in the river. Chassell resident Mat Moore designed the signs. Keith Meyers developed the narratives with technical assistance from John DePue from the MDNR and Joe Youngman. Steve Rouser with the Western Upper Peninsula Planning and Development Region provided technical assistance with the map. Industrial Graphics in Houghton produced the signs which were installed by Steve Spahn and Keith Meyers.



Sturgeon River Canoe/Kayak Launch interpretive signs funded by Visit Keweenaw

Another project completed in 2020 included the mapping of the Chassell Classic Ski Trail, Chassell Snowshoe Trails, and Chassell Fitness Trail. The GPSing of the trails was completed by MTU's Director of Research Computing, Gowtham, with assistance from Keith and Julie Meyers and Jay Fedorocko.



Keith Meyers wrote a grant proposal to the Keweenaw Community Foundation seeking funding to put in large trailhead map signs at the Chassell Heritage Center, the old ice rink on Hancock Street, the Marinette Street trailhead, and the Archambeau Road trailhead, as well as smaller map signs at the 2k and 5k cutoffs on the trail system. The proposal was funded at \$1,256 and the signs were manufactured by Copper Island Printing in Calumet and installed by the Chassell DPW staff, Joe Youngman and Cole Smith (below).



2021 Projects

The Planning Commission invited the Superior Alliance for Independent Living (SAIL) to perform an accessibility review of Centennial Park. SAIL had supported the township's MDNR 5-Year Recreation Plan and recommended that the township consider a formal site review of the park. The review's report noted the existing playground equipment did not meet the standards for

new playground construction. While there was no mandatory requirement to change the existing playground, the township was encouraged to investigate how other communities in the UP are using grants and local fundraising to add an enhancement to their park with an accessible playground. Given this recommendation, the condition/age/poor drainage of the existing playground, the Planning Commission proposed replacing the existing playground. Planning Commission Secretary Ericka Malone who is an engineer for OHM was familiar with a manufacturer's grant program through Game Time. The Commission selected three ADA accessible playground options through Game Time and presented them to township residents through a Survey Monkey to get public input on which option to select.

Keith Meyers wrote a Portage Health (now Copper Shores Community Health) Foundation Recreation Grant proposal which was funded at \$20,000. Ericka Malone secured a manufacturer's grant from Game Time in the amount of \$20,389.05. The Planning Commission also worked with the Chassell Lions Club which contributed \$10,000 to the project. The balance of the project's cost was covered by the recreation millage.

This project involved a substantial contribution of in-kind labor which came in the form of Mike Randel's construction trades class at the Chassell Township Schools which dismantled the former playground as well as significant volunteer labor which came in the form of a large number of MTU athletes coordinated by Ericka Malone, Chassell Lions Club members, Planning Commission and Township Board members, Chassell DPW staff, and other community/area volunteers who constructed the playground in two days.

Once the former playground was dismantled, DP Construction prepared the site by elevating it with material that would provide for better drainage. Rich Sinclair from Sinclair Recreation out of Holland, Michigan provided general supervision of project's volunteers on June 23rd and 24th. The first morning was spent triangulating from a single point and laser verifying appropriate hole depths for all of the holes to be dug for the equipment.





Chassell DPW staff member Craig Austin drilled holes in the playground site with equipment lent by DP Construction



Sleeves for the holes were cut by these MTU athletes and then placed in the drilled holes



The playground equipment was delivered just in time after a lunch provided by Baraga Lakeside Inn. After unloading and uncrating everything, parts were then moved to their appropriate hole locations on the site.



At this point the detailed assembly of the equipment took place which went on all afternoon of the first day of construction.









Day two would be focused on concreting the playground's posts into place and moving wood fiber under the equipment.







Also in 2021, Planning Commission member Trevor Clark suggested that the township develop a 9-hole disc golf course behind the Chassell Township Schools. Keith Meyers wrote a Portage Health (now Copper Shores Community Health) Foundation small grant proposal seeking funding for the equipment necessary for all of the holes. The Foundation awarded the township the requested \$2,973.50 for the project. Trevor coordinated volunteer events to brush the fairways and to install the baskets for each of the holes.



Keith Meyers and Trevor Clark spent seven hours brushing the course on August 13th



On August 18th, Trevor coordinated 17 volunteers including these students who continued the fairway brushing process.

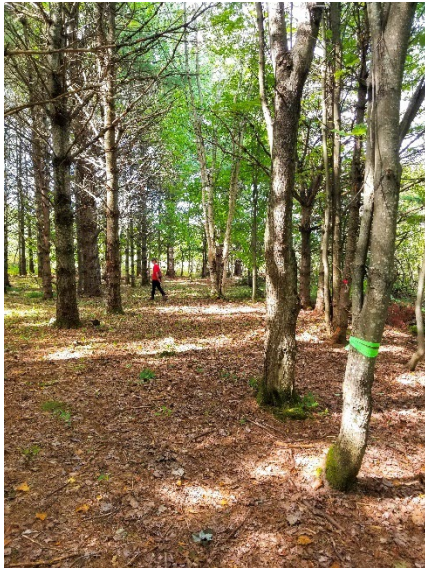
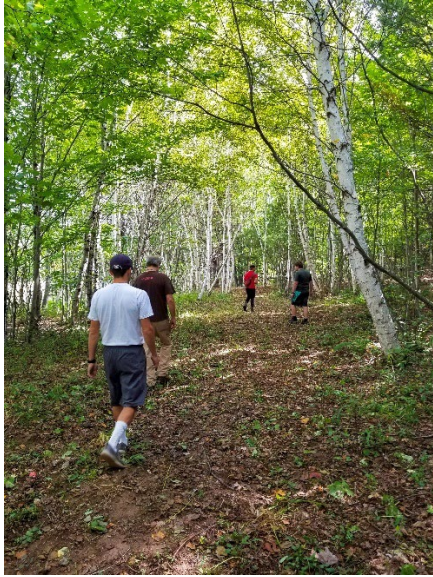
On September 6th, Trevor gathered another group of volunteers at the course to dig holes and concrete in the posts, and attach the baskets.



Left: Trevor Clark and Marco Guidotti loading up equipment; Right: Mark Ware and Marco digging a hole and preparing to install one of the posts.



Volunteers limbing trees and clearing fairways for the course.



Walking the course after the post bases were installed.



September 6th volunteers

With the baskets in place, on September 24th, MTU Director of Research Computing, Gowtham, came out to GPS the course to facilitate the course's mapping.



2022 – 2023 PROJECT

A significant project that reached its final implementation stage in 2022 and 2023 was the Historic Trail project. When residents indicated an interest in historic trails in the 2017 Recreation Survey, Planning Commission member Doug Hamar suggested having an historic interpretive trail on the site of the Sturgeon River Lumber Company and Worcester Lumber Company which were located along Chassell (Pike) Bay (from 1888 to 1902 and 1902 to 1928, respectively) on land that Doug owns. Doug indicated a willingness to provide an easement, but putting in a trail would require a significant amount of boardwalk to traverse what has become a wetland.

Keith Meyers, who also serves as President of the Chassell Historical Organization, reached out to John Baeten, a graduate student in MTU's Industrial Archeology program to see if his department would be interested in getting involved with the project. John was getting ready to graduate, but referred Keith to LouAnn Wurst who as a faculty advisor connected Keith with James Schwaderer who was a Ph.D candidate in the industrial archeology program and very interested in helping the project.

Working with James, a concept was developed to do a loop trail from the southwest corner of Centennial Park following the rail-trail to the two-track that goes toward the lake from off the Chassell-Painesdale Road. Upon reaching the lake at the location of the mill's hot pond, the proposed trail would run over the mill site roughly following the course of the mill's steam line to the location of the planing mill before cutting back out to another two-track leading back to the park. Additionally, the proposed trail would include nine interpretive signs to tell the history associated with the mill, the people who worked there, and the products produced. Keith approached fellow Planning Commission member Steve Spahn who was also then Superintendent of the Chassell Township Schools about having James work with students on the development of the signs. This resulted in James connecting with Marco Guidotti, who was then a history teacher, to work with his students on researching the mill's history and visiting the site.



James Schwaderer and Keith Meyers after making a presentation on the project at the Chassell Heritage Center in July 2019

The next challenge was to find funding for the project. Keith ultimately connected with the John and Melissa Besse Foundation. Their organization was very interested in helping preserve this important part of the area's forest products history and provided a significant grant to the Chassell Historical Organization which would cover the costs associated with putting in 400 feet of boardwalk and producing the nine interpretative signs for the trail.

Before the trail's boardwalk could be constructed, permitting had to be secured from the State of Michigan's Environment, Great Lakes, and Energy (EGLE) agency. Keith helped Doug secure the needed permit. While going through this process, the Planning Commission in partnership with the Chassell Township Schools started clearing the corridor for the trail. In the fall of 2021, Keith coordinated with fellow volunteer North Country Trail sawyers, and they made the first pass at cutting out fallen trees and the dense stand of tag alder on top of the mill. Students from Marco Guidotti's history class and Mike Randell's construction trades class visited the site to move the cut materials from the proposed course of the trail.



Left: North Country Trail volunteer sawyers Mark Roberts, John Diebel, Ken Rubin, and Keith Meyers; Right: Marco Guidotti's history class on one of their visits to help clear the trail.

During 2022, the research the Chassell Township Schools students performed was turned over to the Chassell Historical Organization Board of Directors. The current Chassell Heritage Center Curator, Mat Moore, past Curator Luanne Hamel, Keith Meyers, and Brian Waters reviewed the input and distilled it into content for the nine planned interpretive signs. The Chassell Historical Organization then partnered with Terri Frew's art and design class at MTU on designs for the nine signs. Keith Meyers met with her fall semester class about the project then took them on a tour of the mill site.



Terri Frew (right) touring the mill site with her MTU art and design students – Fall 2022

Each of Terri's nine students was assigned one of the signs and their project was to come up with three concepts for their assigned sign. Once completed, these came back to the Chassell Historical Organization for review. A design choice was made for each sign by the review committee and suggestions were made for refinement. When the designs were finalized, they went to Industrial Graphics in Houghton for production.

During the fall of 2022, Mat Moore and Keith Meyers prepared the wetland trail corridor by weedwhacking and clearing remaining obstructions ahead of the construction of the boardwalk which DP Construction would begin in November 2022.



Mat Moore at the south end of the former mill complex.

The Chassell Historical Organization also developed a relationship with Don Lafrenier who is the Social Science Department Chair at MTU which resulted in the Keweenaw Time Traveler being integrated into the project. By going to their website, visitors to the mill can pull up historical maps like the 1908 Sanborn Maps and the 1924 Nautical Map to ping themselves against the former built environment. James Juip, another industrial archeology graduate student, developed a digital storybook, as told by Stanley the Strawberry and Sheila the Shingle, to interpret the site for younger children.

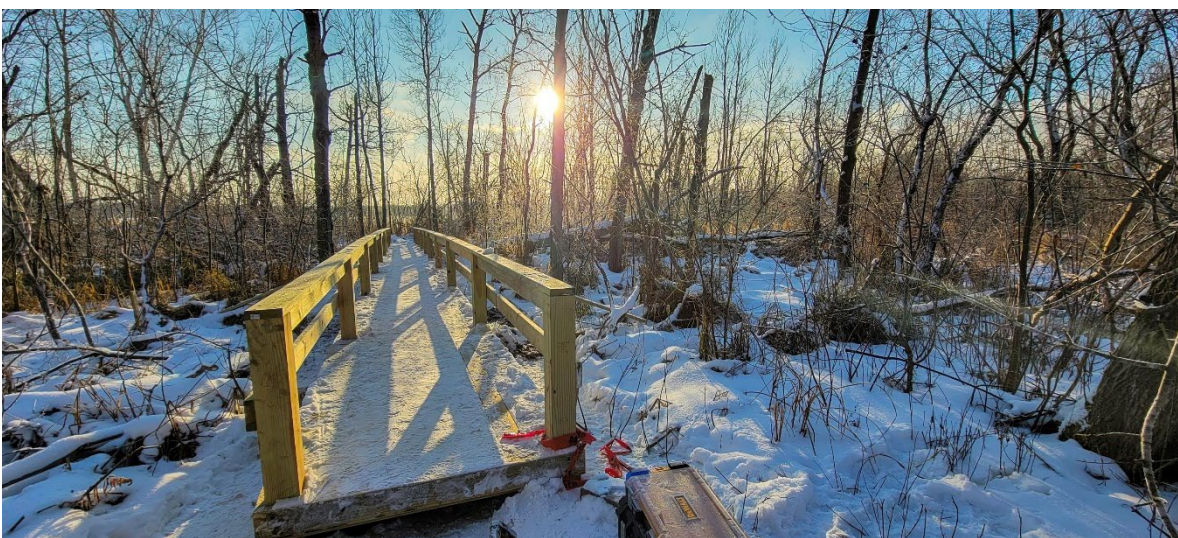


Mat Moore and Don Lafrenier discussing the Keweenaw Time Traveler on site – November 2022

DP Construction started work on the boardwalk the second day of firearm deer season and would finish all but a small amount of work by mid-December.

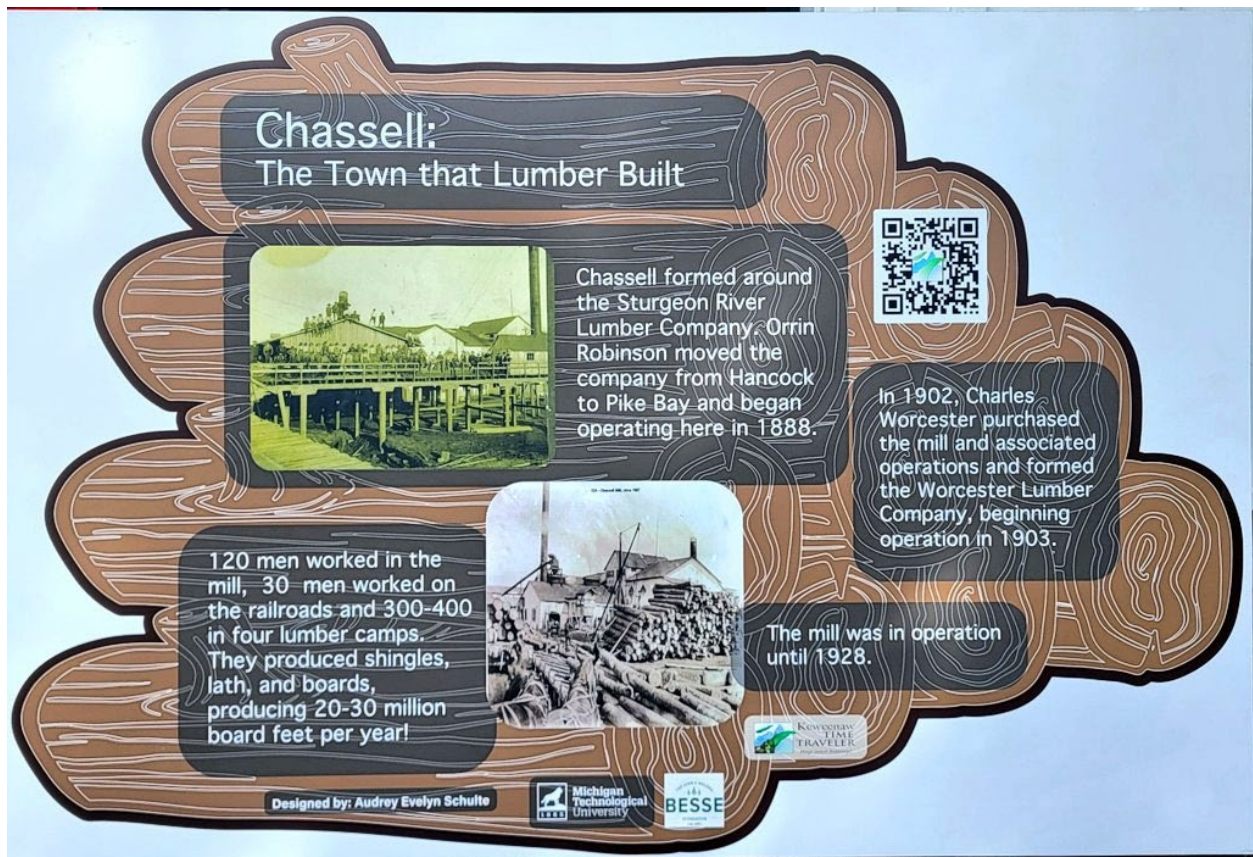








With DP Construction's spring work completed, the final step was to install the interpretive signs manufactured by Industrial Graphics. These would be installed in time for the 75th Strawberry Festival.



Steve Spahn and Brian Waters mixing Quikrete to install an interpretive sign on the trail.





DESCRIPTION OF PLANNING PROCESS

The planning process for the 2023 – 2028 Chassell Township Recreation Plan included (1) design and implementation of a community survey about recreational opportunities in Chassell Township that was announced in August and kept open through September 30; (2) review and assessment of public comments and survey results by the Chassell Township Recreation Committee for integration into a new Recreation Plan; (3) preparation of a review draft of the 2023 – 2028 Chassell Township Recreation Plan distributed for public review and comment on October 16, 2023 with an additional opportunity to comment at public meetings including the Chassell Township Planning Commission meeting on November 2, 2023, and a special final public hearing on December 4, 2023; and (4) presentation of a final draft plan to the Chassell Township Board of Supervisors for approval at its December 13, 2023 meeting.

The results of the Chassell Township Recreation Plan Survey are an important driver in identifying priority recreation improvements in Chassell Township over the next five years. Chassell Township mailed a postcard notice of the recreation plan survey to all households and post office boxes in the Township in August 2023. Residents and a few adjoining non-residents were encouraged to complete a Google Survey online or pick up a hard copy from the township offices or DPW. A total of 201 responses were received which was 27 greater than the number of responses received with the 2017 survey. 68.6% of those responding indicated that they did not respond to the 2017 survey.

A final draft survey report was distributed to the Chassell Township Recreation Committee prior to its meeting on October 12, 2023. After review and discussion, the committee made preliminary conclusions and recommendations including the following:

- Continuing to focus on development of river trails garnered the highest level of interest of all recreation activities with over 77% supporting continued development and 19% were indifferent. A related question about interest in using the services of Portage Paddle

Sports found that over 56% of respondents would be interested. The Committee highly recommends continuing this focus.

- Coming in at a close second was pursuing opportunities to improve fishing at almost 74%. With the recent MDNR SPARK Grant award for Centennial Park, there will be an immediate opportunity here with the rebuilding of the waterfront boardwalk. This input could inform important tweaks by UPEA to the final design.
- There is substantial interest in establishing pickleball courts as this was favored by nearly 60% of respondents. The committee recommends that the Commission make this a priority as the interest locally seems consistent with interest nationally.
- 2/3 of respondents indicate that they utilize Centennial Park and development of a Splash Pad received the most enthusiastic support. It is recommended that the Commission explore this option and continue to explore options at the park for older kids.
- The revitalization of Misslitz Field also received strong, enthusiastic support. The Committee recommends that a committee be formed to set priorities for action and to include Millie Pyorala and Dorthey Behrend in this process.
- The Committee noted many other great ideas in the respondent feedback and would recommend that the Commission keep an open mind about additional opportunities based upon ongoing dialogue with residents regarding their expressed interests.

RECREATION INVENTORY

CHASSELL TOWNSHIP RECREATION FACILITIES

A variety of outdoor and indoor recreation facilities are found in Chassell Township and the surrounding area, as summarized below.

Chassell Township School

The Chassell Township Schools consists of a K-12 school building (1991) located near the community of Chassell. Facilities on the school grounds include a gymnasium and playground.

Misslitz Field

The Misslitz Field ballpark is located to the west of the Chassell Heritage Center. The 4-acre site includes a little league/softball field and a trailhead for the Chassell Classic Ski/Snowshoe Trails and the Chassell Fitness Trail.

MDNR Rail-Trail

The old Soo Line Railroad grade (Figure 7) is currently owned by the State of Michigan and managed by the Michigan Department of Natural Resources (MDNR). The public easement runs from the south end of Chassell (Sturgeon River Bridge) to the north end of the Township, paralleling US 41. The MDNR trail provides local opportunities for walking, running, and bicycling. It is open to snowmobile use during winter but is closed to motorized vehicles the rest of the year (including motorcycles and ATVs).



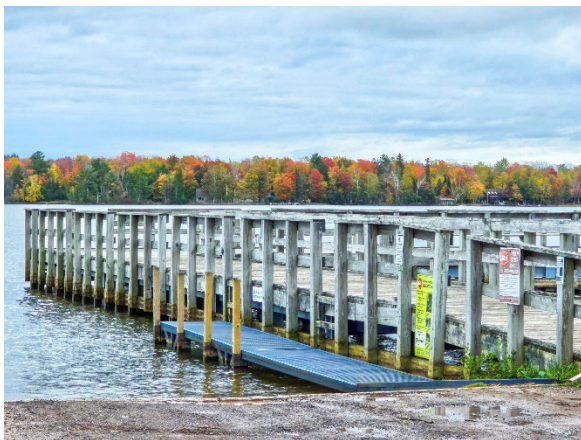
(Figure 7. Rail-Trail in the fall)

Centennial Park

The Chassell Township Centennial Park is located on Chassell (Pike) Bay (Figures 8 - 11). This facility was developed with the assistance of MDNR Waterways Division, LAWCON and MNRTF funding, and is continually being improved as funds become available. Several improvements recommended by the Master Shoreline Plan for Pike Bay, Portage Lake (U.P. Engineers & Architects, Inc. prob. 1995) were made in past years by the Township. Of special importance was a fishing dock accessed by a boardwalk from the Centennial Park parking lot, thereby expanding fishing opportunities for youth and adults. Unfortunately, this boardwalk was built on wood piers too close to the water and was wiped out by the ice. Just this month, Chassell Township was awarded a \$495,000 SPARK Grant that will make significant improvements to the park and greatly improve accessibility within the facility. Part of the grant program is to replace this destroyed asset and to make it ADA accessible. Additionally, the grant will replace the existing fixed boat launch dock with an adjustable boat ramp dock which will create safer boat access regardless of the lake level. The grant will also retrofit the pavilion restrooms to make them ADA accessible and provide an exterior door to allow their use year-round and not just when the facility is rented. An ADA accessible walkway will be constructed to connect the pavilion to the waterfront at the dock and re-built waterfront boardwalk. It should also be noted that the park also includes a fish-and-game cleaning station which was funded by the Township, donations, and a MDNR Land and Water Conservation Grant.

The Park currently includes:

- two boat launching ramps with trailer parking
- fishing and mooring docks (replacing fixed boat ramp dock with adjustable boat ramp dock with SPARK grant) and waterfront boardwalk connecting fishing docks
- swimming beach
- small picnic area
- playground equipment (replaced and made more accessible in 2021)
- horseshoe courts
- vault toilet
- three-season restroom facilities (installed 2014)
- ice skating rink (winter only - replacing boards as part of SPARK Grant)
- open air pavilion (making needed improvements with curtains as part of SPARK Grant)
- fish-and-game cleaning station
- community center building and pavilion (making restrooms ADA accessible with SPARK Grant as described above)
- basketball court
- beach volleyball court
- off-leash dog park (installed in 2019)
- access point to historic interpretive trail (opened in 2023)



Figures 8. Centennial Park fish-and-game cleaning station with pavilion and community center building in background. Figure 9. Centennial Park boat ramp, fishing dock and mooring dock.

Figure 10. Wider view picking up both boat ramps and the current fixed boat ramp dock to be replaced by an adjustable boat ramp dock with funding from the SPARK Grant



Figure 11. The current state of the waterfront boardwalk built on wooden piers too close to the water that was destroyed by ice and will be replaced with a new boardwalk on steel piers with funding from the SPARK Grant.



Chassell Classic Ski Trail and Chassell Fitness Trail

Chassell Township has cooperated with a volunteer group led by Jim Tervo for the development and maintenance of ski trails. A 10-kilometer groomed classic ski trail is located west of the Chassell Heritage Center and extends westward to just east of Paradise Road. The two primary trailheads are located at the Chassell Heritage Center and on Archambeau Road. The Township has supported improvements to the trail including the re-construction of the South Bridge in 2019. The township owns the lower 67 acres on which roughly a third of the trail is located. The township has supported and gained additional funding support to make this portion of the trail usable during non-winter months by developing the 4-kilometer, 10-station Chassell Fitness Trail in 2019. A nature trail developed by former Chassell DPW Joe Youngman loops into this area from a starting point at the Chassell Cemetery.



Figure 12. Views of the High Bridge on the Chassell Classic Ski Trail

Chassell Snowshoe Trails

Also located to the west of the Chassell Heritage Center and extending westward to the area near Archambeau Road is the roughly 10-kilometer Chassell Snowshoe Trails. This trail system is maintained by Jay Fedorocko who is one of the landowners over which part of these trails and the Chassell Classic Ski Trail traverses. The trails can be accessed from the trailheads behind the Chassell Heritage Center, at the old ice rink on Hancock Street, from Marinette Street, and from Archambeau Road. (Figure 13)

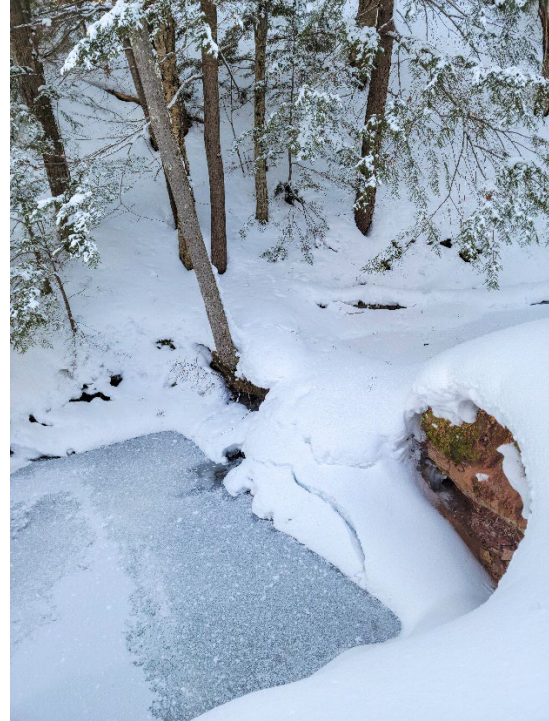


Figure 13. Scenes from the Chassell Snowshoe Trails – Left: snowshoeing through a pine forest; Right: snowshoeing along a frozen-over Hamar Creek Falls

Sturgeon River Sloughs and South Portage Entry

The Michigan Department of Natural Resources maintains a public access site at the Sturgeon River Sloughs. This access site is located two miles south of the community of Chassell. The Sloughs are known for hunting and fishing opportunities, as these wetlands provide excellent fish and waterfowl habitat. The U.S. Army Corps of Engineers operate an access site at the South Portage Entry (Figure 14). This site is located five miles south of Chassell, and includes a boat launch, a large concrete pier used to tie-up large craft, and a picnic area with vaulted toilets. Portage Lake and the Keweenaw Waterway are included in the larger Keweenaw Water Trail, marketed, and managed by the Keweenaw Water Trail Association (<http://kwta.org>).

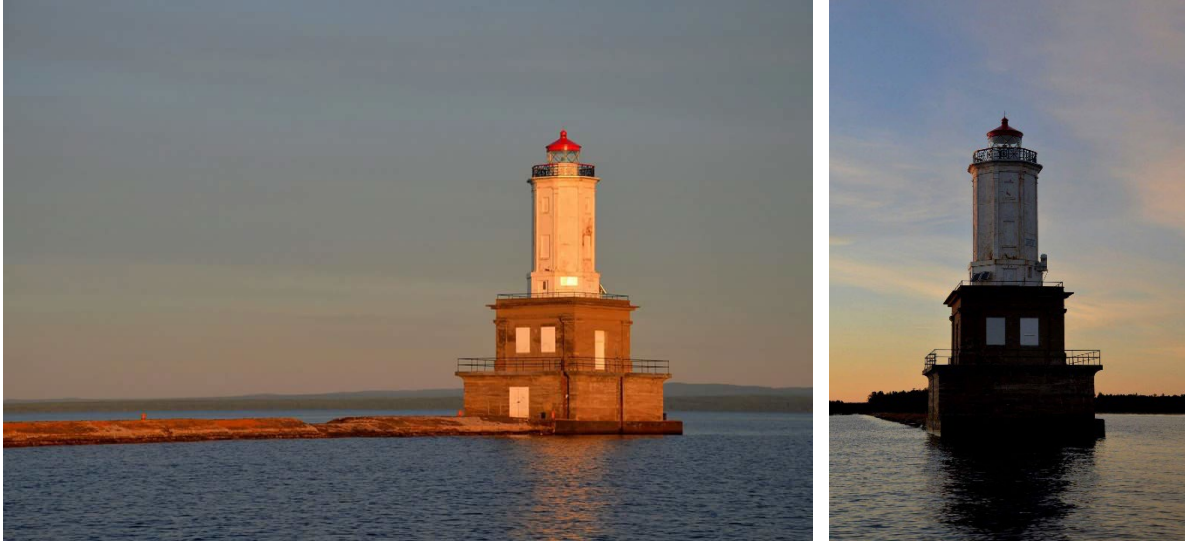


Figure 14. Views of the lighthouse at the South Entry.

Sturgeon River Trail

In July 2023, Chassell Township established a canoe/kayak launch on the northwest side of the US 41 bridge over the Sturgeon River just to the southeast of the community of Chassell. An outgrowth of the 2018 – 2023 Recreation Plan, this ADA accessible launch creates a river trail for residents and visitors to access this highly navigable river to float downstream to the cut constructed by the Sturgeon River Boom Company in the 1870s to access Chassell (Pike) Bay, Centennial Park, and the Chassell Historic Trail. Other options include floating the river to its mouth on Portage Lake and circling back to the Bay or proceeding down the Portage River to the Sloughs, Snake River, and/or Portage Entry. The launch is also a potential take-out point for those putting in upstream below Otter Lake or even as far upstream as below Prickett Dam (Figure 15).



Figure 15. Floating the Sturgeon River Trail below the US 41 canoe/kayak launch

Chassell Township Disc Golf Course

In September 2021, Chassell Township through a partnership with the Chassell Township Schools established a 9-hole disc golf course behind the schools. The course is available to the public when school is not in session. The course was funded by a small grant from the Portage Health (now Copper Shores Community Health) Foundation and was constructed by local volunteers.

Chassell Historic Trail

The Chassell Historic Trail opened in 2023 as a partnership between the Chassell Historical Organization, landowner Doug Hamar, the MDNR, MTU's Keweenaw Time Traveler, and Chassell Township. This .4-mile trail starts at the southwest corner of Centennial Park, follows the Rail-Trail to where the Chassell-Painesdale Road would cross, then proceeds on a two-track trail to the lake at which point the trail goes over the former site of the Sturgeon River Lumber Company and Worcester Lumber Company sawmill, lath mill, shingle mill and planing mill. As much of this area has become a wetland, much of the trail in this area is on 400' of boardwalk before connecting with another two-track trail and returning to the park (figure 16).



Figure 16. One of nine interpretive trails found along the Chassell Historic Trail

In addition to Chassell Township recreational facilities, the City of Houghton, and Michigan Technological University (MTU) offer facilities that can be accessed by Chassell Township residents. The MTU campus provides extensive indoor/sports facilities, including an ice arena, ball fields, running trails, mountain biking trails, cross country ski trails, Student Development Complex (e.g., basketball courts, indoor running track, indoor pool, racquetball courts, fitness equipment). These facilities are available to the public on a fee basis. The Student Development Complex requires either the purchase of a punch card for single use visits or the purchase of an annual access card and/or trails pass. An additional swimming pool is located at the Houghton – Portage Township High School in Houghton.

OTHER RECREATION FACILITIES

In addition to the facilities described above, there are numerous other recreation opportunities in the Keweenaw Peninsula. This includes several state and national parks that are easily accessible to residents of Chassell Township, including Isle Royale National Park, McLain State Park, Fort Wilkins Historic Park, Twin Lakes State Park, and Baraga State Park. The Keweenaw National Historical Park is preserving important cultural heritage sites in the region associated with historical copper mining, milling, and smelting. Included among these sites is the Chassell Heritage Center, located within the former Southwell Elementary School.

Ice skating and hockey are popular winter sports in the region. Indoor ice facilities are located at the Houghton County Arena in Hancock, the Dee Stadium in Houghton, and the MTU Student Development Center in Houghton. Downhill skiing can be experienced at MTU's Mont Ripley Ski Hill, near Hancock; at Mt. Bohemia in Keweenaw County; and at the Porcupine Mountains Wilderness State Park in Ontonagon County.

Cross country skiing has long been a traditional winter activity within the Keweenaw region, and its popularity in the Midwest has benefited regional tourism. In addition to the Chassell Class Ski Trail, groomed and tracked trails are found north of Chassell at Copper Harbor, Eagle Harbor, Calumet (Swedetown Trails), Hancock (Maasto Hiihto and Churning Rapids Trails), Houghton (Michigan Tech Trails), and south of Chassell at Twin Lakes, Courtney Lake (Ottawa National Forest, and near L'Anse (Pinery Trails). More trails are needed in the area to attract/accommodate visiting skiers.

Mountain and Snow Biking continues to grow in popularity within the region. The MTU Trails, Maasto Hiihto/Churning Rapids Trails, Swedetown Trails, and Copper Harbor Trails have outstanding trail systems that appeal to a range of ability levels. These trails have become very popular with those from outside the region, so continued growth of available trails is important to both local residents and those visiting the area.

The Keweenaw is rich in water-oriented recreation opportunities. In addition to the Sturgeon River and Sloughs, Chassell (Pike) Bay, Portage Lake, Portage and Snake Rivers, and Lake Superior, the region contains numerous inland lakes and streams (figure 17).



Figure 17. Salmon fishing on the Pilgrim River

GOALS AND OBJECTIVES

The goal of the 2023 – 2028 Chassell Township Recreation Plan is to meet the primary recreation needs of full-time and seasonal residents of Chassell Township in an efficient and cost-effective manner. The objective of the Recreation Plan is to provide a list of priority recreation development concepts for Chassell Township, to be pursued by the Township Board of Supervisors through grants, contributions, and internal funds.

Based on the review and assessment of answers and public comments provided in response to the 2023 Recreation Survey, the Recreation Committee recommends six priority development concepts:

- (1) continue developing the Township’s river trail system;**
- (2) develop local fishing opportunities;**
- (3) plan and construct pickleball courts;**
- (4) plan and construct a Splash Pad at Centennial Park;**
- (5) plan and revitalize Misslitz Field;**
- (6) continue work to enhance the recreational trail system.**

Develop the Township’s River Trail System

The Township has made significant progress to develop the river trail system with the establishment of the canoe/kayak launch at the US 41 bridge over the Sturgeon River. Continuing to develop this site has been an ongoing discussion item for the Planning Commission and the number one position in the survey results are affirming of this effort. Improving the road into the launch and the available parking, as well as adding a vault toilet, picnic tables, trash receptacles, and possibly a barbecue are all elements that the Commission has discussed. Strong consideration has been given to submitting a grant proposal for either a MDNR Natural Resources Trust Fund Grant or a MDNR Passport Grant in the 2024 cycle to address these needs.

Additionally, the Planning Commission has been in discussion with the Baraga County Convention & Visitors Bureau about the possibility of partnering on their development of a launch site below the dam at Otter Lake. Putting in below the dam is tricky enough for the able-bodied and this is a significant need which would help encourage boaters to take this longer float to Chassell. The Planning Commission has offered to share our successful grant proposal for which we were awarded funding from the Copper Shores Community Health Foundation for our launch project to help Baraga County and ultimately Chassell toward this end.

The Planning Commission has also discussed with the Baraga County Convention & Visitors Bureau the possibility of jointly pursuing designated River Trail status from the MDNR to help promote the Sturgeon River as a destination float trip. The river is quite floatable from below Prickett Dam all the way to Chassell. Achieving this status would help increase the visibility of this recreational opportunity both locally and statewide, which would benefit this region economically. The Planning Commission will draft a proposal and share it with the Baraga County Convention & Visitors Bureau for their county’s input.

An additional consideration would be to attach a canoe/kayak launch vehicle to the rebuilt waterfront boardwalk. The Commission should communicate this potential future direction to UPEA so the final design could accommodate such an addition.

Develop Local Fishing Opportunities

In rating this development opportunity so high in priority, respondent comments were clear that replacement of the waterfront boardwalk was very important to them. Replacing the destroyed waterfront boardwalk is a key project within the SPARK Grant recently awarded to Chassell Township; as a result, action will be coming very quickly on this priority.

The Planning Commission has previously discussed the possibility of working with MTU and the MDNR on doing a brook trout restoration project on Hamar Creek. Previous floods have created a meander into a wetland near Chassell (Pike) Bay that has resulted in the loss of a key part of this former trout habitat.

The Planning Commission should engage key stakeholders like the Copper Country Country Walleye Club, Trout Unlimited, and the MDNR to determine additional potential direction in response to this priority.

Develop and Construct Pickleball Court(s)

Chassell residents' strong interest in pickleball clearly mirrors what is happening both nationally and within the area. Hancock recently constructed pickleball courts which appear to have become quite popular as recently reported in the Daily Mining Gazette.

The Planning Commission should first determine an appropriate site for pickleball courts. When asked about potential uses for the site of the old ice rink on Hancock Street, many identified that location as a potential site for pickleball. The old basketball court between the Chassell Heritage Center and Misslitz Field would be another, as would the open space at Centennial Park.

Regardless of the site selected, the Commission should assure that the courts are engineered for appropriate drainage.

Develop and Construct a Splash Pad

Enthusiasm for developing this feature targeting younger visitors at Centennial Park is very high. Determining an appropriate site should be the first step along with contacting the Village of L'Anse to find out what lessons they have learned through the implementation of the Splash Pad at their park. Tapping the Chassell DPW staff's knowledge and properly engineering the project would be important steps in assuring success.

The Committee encourages the Planning Commission to take input from Chassell residents about a feature directed at older kids. A partnership with the Chassell Township Schools to seek input from its students may be a good starting point.

Revitalizing Misslitz Field

Seeing the enthusiastic response and the broad range of suggestions related to potential actions, the Committee strongly encourages the Planning Commission to set up a committee of key stakeholders to develop a vision for Misslitz Field and to set forth action items to be considered. Given their long involvement with keeping up the field and knowing its history, Millie Pyrola and Dorthey Behrend should be a part of this committee.

Enhancing the Recreational Trail System

This recommendation is a modified holdover from the previous Recreation Plan. The first element here is re-establishing a snowmobile trail between Chassell and the Nichols Trail. The Planning Commission reached out to residents along the former course of the trail and learned there was a lack of support among contiguous landowners to re-establish a trail. Off-trail sledding and subsequent user expectation to use winter-only trails for ORV use during non-winter seasons were the causes cited for being unwilling to re-establish the former route.

Without an established trail, the Chassell-Painesdale Road is frequently used as the default route. The Planning Commission has discussed the possibility of establishing an easement along the Chassell-Painesdale Road with the Houghton County Road Commission but were told by the HCRC that this presents an issue for plow truck drivers and would not be possible.

Chassell Township has recently become a member of the Houghton County Recreation Authority where it has brought forward the issue of re-establishing a snowmobile route between Chassell and the Nichols Trail. The Committee recommends that the Township continue attempting to problem-solve this issue with the County.

The second element involves development of the former rail corridor between Baraga and Chassell. The MDNR already owns the portion of the corridor between Baraga and Arnheim. MDOT controls the portion of the corridor from Arnheim to the Sturgeon River. The Planning Commission has discussed partnering on the development of this corridor with the Baraga County Convention & Visitors Bureau on developing this route as a multi-use (bicycles, ORVs, etc.) trail. Chassell Township discussed this issue at the most recent Houghton County Recreation Authority meeting in a conversation with Ron Yesney with the MDNR. He expressed optimism about this sort of development if enough support could be brought behind it. The Committee recommends that the Planning Commission continue this effort as establishing a multi-use trail between Baraga and Chassell would be important both recreationally and for economic development.

ACTION PROGRAM

CAPITAL IMPROVEMENT PRIORITIES

The priorities for recreation-related capital improvements by Chassell Township during 2023 – 2028 are: **developing the river trail system; developing local fishing opportunities;**

developing and constructing pickleball courts; developing and constructing a Splash Pad; and Revitalizing Misslitz Field.

In 2024, the Township should determine a scope of work for further development of the canoe/kayak launch site and, leveraging recreation millage funding, apply for either a MDNR Natural Resources Trust Fund Grant or a MDNR Passport grant to complete the work. Given the timeline associated with this process, work would not take place and funds would not be expended until 2025.

In 2022, Planning Commission Vice-Chair Keith Meyers and Township Clerk Lynn Gierke developed the Township's MDNR SPARK Grant proposal. On October 9, 2023, the Township received notification that it will be awarded this \$495,000 grant which will help the Township address important accessibility issues at Centennial Park identified in the accessibility report completed by the Superior Alliance for Independent Living (SAIL). The Chassell Lions Club has also committed significant funding to this project. The deliverables in this grant program include:

- rebuilding the waterfront boardwalk connecting the two docks on steel piers;
- building a connecting boardwalk to the trail along the north side of the Bark Park;
- removing the fixed boat ramp dock and replacing it with an adjustable boat ramp dock;
- constructing an Americans with Disabilities Act (ADA) accessible concrete walkway from the pavilion to the waterfront and providing accessible connections to both the dock and waterfront boardwalk;
- retrofitting the restrooms in the pavilion to be ADA accessible along with environmentally sustainable features;
- constructing new boards for the pavilion ice rink; and
- repairing/improving the curtains around the pavilion.

Funding from this grant will address an important aspect of improving fishing opportunities through the rebuilding of the waterfront boardwalk. The Township will move as quickly as possible to rebuild the boardwalk to complete its engineering, bidding, and construction. All the deliverables described above will address important upkeep of Centennial Park which was a priority expressed by many in response to the recreation survey.

The Planning Commission will start exploring other grant funding opportunities to leverage recreation millage funding to carry out construction of the Pickleball Courts, Splash Pad, and revitalization of Misslitz Field as those plans come together.

OTHER RECREATION ENHANCEMENTS

In late 2022, the Township, after a competitive process, contracted with U.P. Engineers and Architects to do a preliminary engineering study on Centennial Park. This study was undertaken when it became clear that the legislature was working toward a bipartisan agreement which was ultimately approved by the Governor resulting in the SPARK Grant opportunity.

Marina Feasibility

As part of this Engineering Study which focused on addressing park accessibility issues identified by the Superior Alliance for Independent Living (SAIL), UPEA has examined the potential location for a marina. The recreation survey found a meaningful level of interest which would support such a future development. The preliminary engineering study will provide important data for seeking potential partners for a public/private partnership for the development of a marina.

Historical Projects/Collaborations

Just over half of respondents to the survey indicated an interest in projects like the Chassell Historic Trail. There will be an opportunity to continue developing this trail through a partnership between the MTU Social Sciences Department and the Chassell Township School. All the interpretive signs on the trail are QR coded so it will be possible to add historical photographs and narratives through the Keweenaw Time Traveler. The Planning Commission will look to the Chassell Historical Organization for ideas on future development opportunities.

ACKNOWLEDGEMENTS

The Chassell Township Recreation Committee would like to acknowledge Keith Meyers for developing the draft plan based upon our review of the resident replies to the Recreation Survey and the priorities set by the Committee. The format and narrative structure follows that developed in the 2018-2023 Recreation Plan developed by MTU Professor of Practice Kenneth J. Vrana and his students in the *Outdoor Recreation and Tourism Systems* course. This undergraduate course is part of the Natural Resources Management curriculum of the MTU School of Forest Resources and Environmental Science (SFRES).

Photo Credits: Keith Meyers, Chassell Historical Organization, Daily Mining Gazette

**Chassell Township Recreation Committee
Chassell Township Planning Commission
Chassell, Michigan 49916**

October 16, 2023